

Abstract

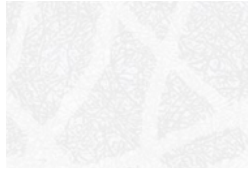
A



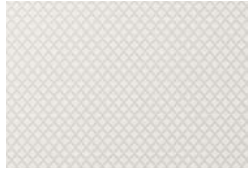
TE-1713



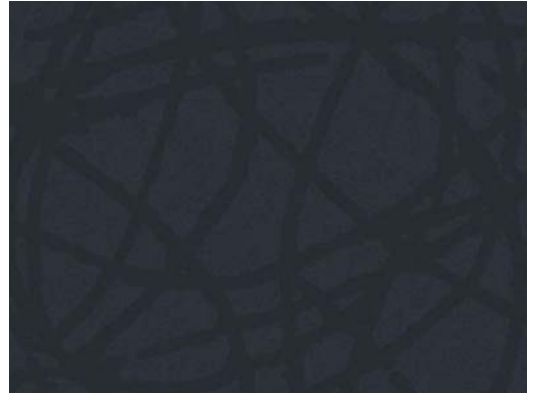
TE-1715



HS-1655



TE-1714



HS-1656

B

C



FA-1095



FA-1150



FA-1153



FA-1099

D



FA-1094



FA-1098

E



FA-1963 NEW



RS-1190 ⓘ

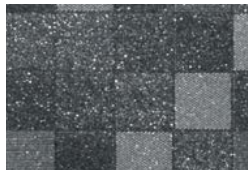


LW-1081



LW-1084

F



RS-1189 ⓘ



LW-1085



LW-1083

G



BW-1310 ⓘ



BW-1315 ⓘ



BW-1312 ⓘ



FA-1161



BW-1316 ⓘ

H



BW-1311 ⓘ



BW-1314 ⓘ



BW-1313 ⓘ

Abstract / Carbon
High Gloss

ⓘ Not recommended for use on compound curved surfaces

NEW New design

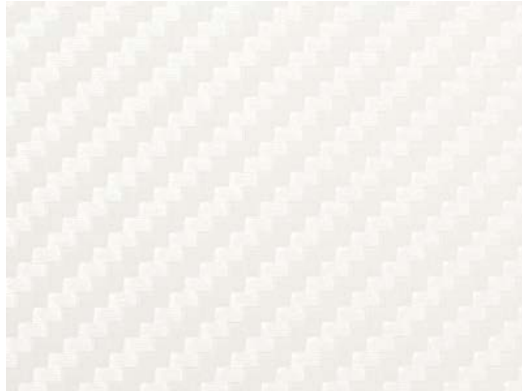
H A product number ending in "H" indicates horizontal grain direction

🖨️ Pattern is large scale; view full pattern width image at 3M.com/AMD

📄 Available in AR Series; see page 48 for visual appearance

📄 Available in EX Series; see page 49 for visual appearance

Carbon



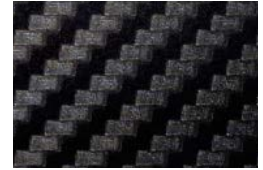
CA-419



CA-418



CA-420



CA-1170



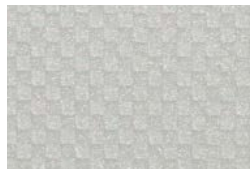
CA-422



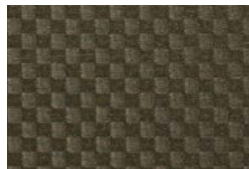
CA-421



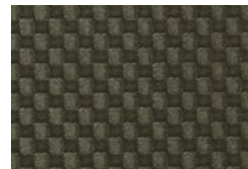
TE-1650



TE-1651



TE-1652



VM-1486 ⓘ



TE-1653

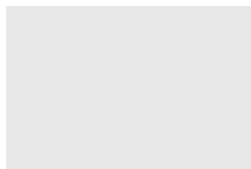
A

B

C

D

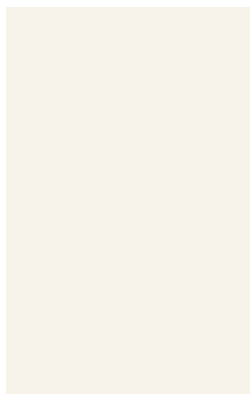
High Gloss



HG-1205 ⓘ



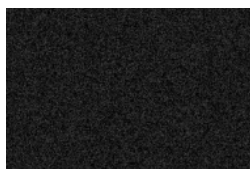
HG-1996 ⓘ NEW



HG-1994 ⓘ NEW



HG-1511 ⓘ



HG-1995 ⓘ NEW



HG-1201 ⓘ



HG-1996 NEW

E

F

G

H

Abstract / Carbon
High Gloss