

Concrete

A



CN-1958 NEW



CN-1622



CN-1621



CN-1623

B

C

Ceramic/Tile

Concrete Mortar / Stone

D



FA-1678



FA-1679



FA-1962 NEW

E

F



FA-1527



FA-1680



FA-1526



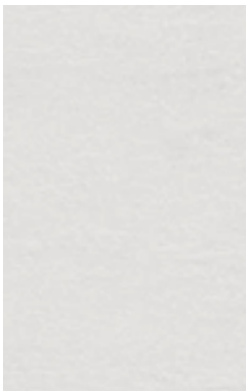
FA-1528



AE-1635

G

H



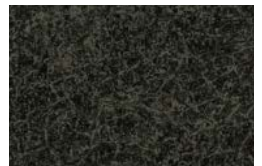
AE-1632



AE-1633



AE-1634



AE-1636

ⓘ Not recommended for use on compound curved surfaces

NEW New design

H A product number ending in "H" indicates horizontal grain direction

📐 Pattern is large scale; view full pattern width image at 3M.com/AMD

AR Available in AR Series; see page 48 for visual appearance

EX Available in EX Series; see page 49 for visual appearance

Mortar/Stucco



AE-1638



AE-1637



AE-1642



AE-1640



AE-1639



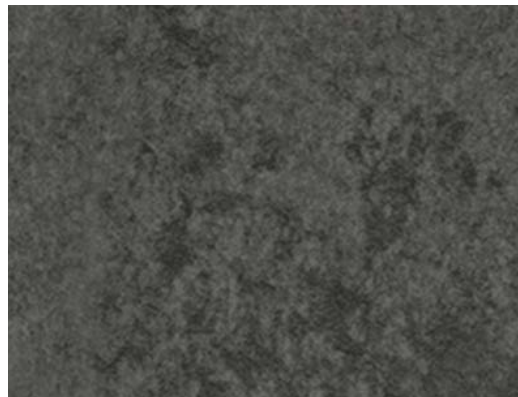
AE-1641



AE-1717 📐



AE-1718



AE-1719



AE-1645 📐



AE-1646 📐

A

B

C

D

E

Concrete
Mortar / Stone

Stone



ST-1831 📐



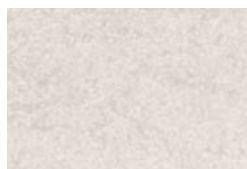
ST-1828



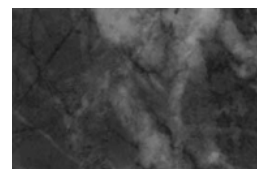
ST-1829



ST-1586 📐



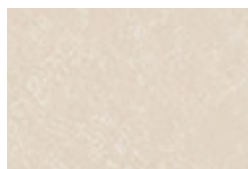
ST-1195 📐



ST-1587 📐



ST-1588 📐



ST-736 AR EX



ST-737



ST-442 EX



ST-1830

F

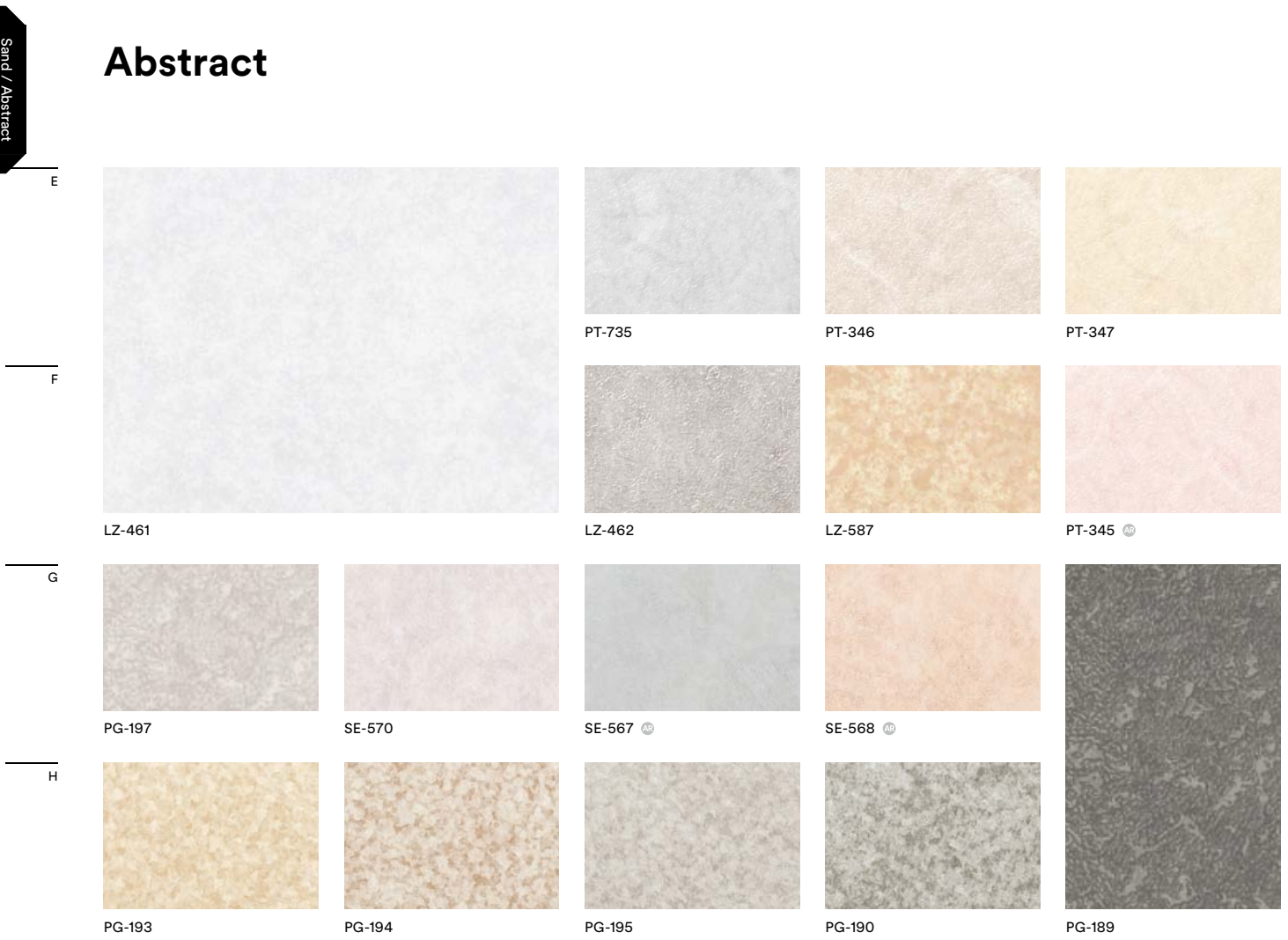
G

H

Sand



Abstract



Sand / Abstract
Leather